

HOW DO HUNTERS KNOW THEY'RE HOT ON A TRAIL? THERMAL IMAGING, OF COURSE.

RevealXR[™]
FASTFRAME

LONG-RANGE THERMAL IMAGING CAMERA AND 300 LUMEN LED LIGHT

Durable, all-in-one thermal imager, with a narrow 20-degree field of view that provides a thermal detection range up to 900 feet, making it perfect for outdoor use. Loaded with FastFrame imaging for smooth scanning on the go.



206 x 156
Thermal
Sensor



20°
Field of
View



-40° F to 626° F
Detection
Range



900 ft
Distance

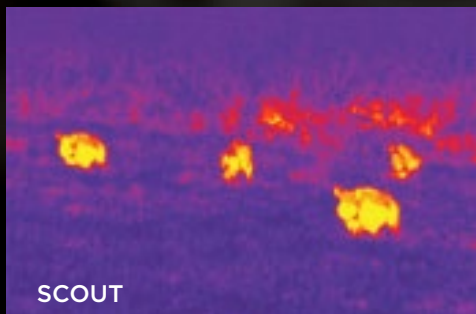


Works
Day & Night



seek[™]
thermal

thermal.com



SCOUT

PERFORMANCE FOCUSED

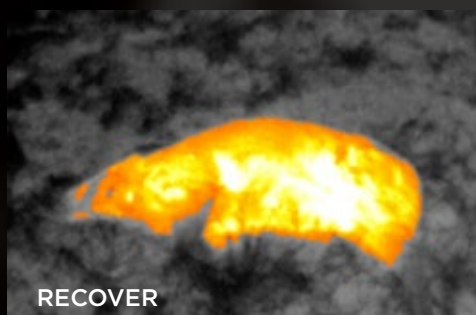
- 900-foot detection distance for tracking any time
- 206 x 156 Thermal Sensor for accurate prey spotting
- Powerful 300 Lumen Light for hunting safety and visibility
- FastFrame imaging displays more than 15 frames per second, providing smooth thermal imaging



TRACK

LONG-RANGE DETECTION THAT'S EASY TO USE

- Intuitive, single-handed interface
- Library of color palettes to customize the built-in display
- MicroSD card for photo capture and USB transfer
- Lasts up to 10 hours in continuous thermal imaging mode



RECOVER

SEEK A NEW ADVANTAGE

- Quick startup provides instant detection
- Accurately scout terrain from afar
- Track and recover day or night
- Stay safe without giving position away



RevealXR
FASTFRAME

SUBJECT TO U.S. EAR EXPORT REGULATIONS

SPECIFICATIONS

DETECTOR & OPTICS

Thermal Sensor	206 x 156
Detection Distance	900 feet (300 yards, 275 meters)
Field of View	20 Degree FOV
Temperature Range	-40F to 626F (-40C to 330C)
Frame Rate	> 15 Hz FastFrame
Focus	Fixed Focus
Lens Material	Chalcogenide
Microbolometer	Vanadium Oxide
Pixel Pitch	12 Microns
Spectral Range	7.5 - 14 Microns

SYSTEM SPECS

Flashlight	300 Lumen LED (programmable brightness)
Display Resolution	2.4" Color, 240 x 320
Temp. Display Scale	Fahrenheit or Celsius
Color Palettes	7 Options
Startup Time	< 3 seconds
User Interface	Self-contained device with 3 button navigation
Storage Media	MicroSD Card Included
Battery	3.7V Rechargeable lithium
Battery Life (operating)	Up to 10 hours continuous thermal

DEVICE & PACKAGE INFO

Country of Origin	Designed and manufactured in Santa Barbara, California, USA with global components
Color	Camo
Device Dimensions (H x W x D)	5 x 2.4 x 1.2 inches
Device Weight	6.25 ounces
Box Dimensions (H x W x D)	6.25 x 3.75 x 3.25 inches
Package Weight	18.5 ounces
Included in the box	Seek RevealXR, Welcome Guide, Wrist Lanyard, MicroSD Card, and USB Cable

DESCRIPTION

For support and user guides visit
support.thermal.com

Seek
thermal

thermal.com